

Sunny Front Entrance (\$1000 - \$2000 depending on plant size)



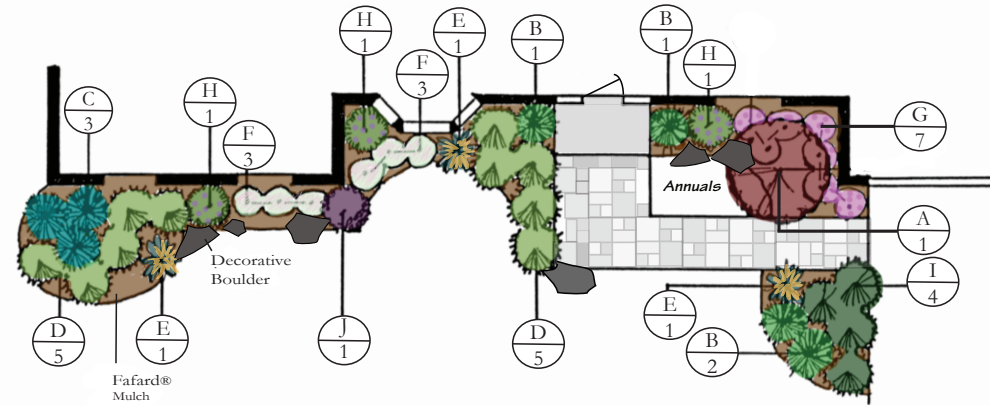
Plants, Materials & Supplies

- A. 'Crimson Queen' Japanese Maple (1)
- B. Holmstrup Cedar (4)
- C. Medora Juniper (3)
- D. Green Mound Boxwood (10)
- E. 'Huron Sunrise' Maiden Grass (3)
- F. Dwarf Dappled Willow (6)
- G. CityLine™ Vienna Hydrangea PW® (7)
- H. Bloomerang® Lilac PW® (3)
- I. Tamarix Juniper (4)
- J. Little Devil™ Ninebark FE® (1)

Parkwood® Transplanter (3 bottles)
 Parkwood® 3 in 1 Planting Mix (27 bags)
 Fafard® Cedar Mulch (27 bags)
 Parkwood® Plant Food (free refills)
 Annuals: Bulbs (spring), Flowers (summer), Mums/Kale (Autumn)
 Decorative Boulder, sized accordingly (7)

10 Essential Tools

Garden Spade, Hoe, Hard Rake, Pruners, Garden Hose w/Nozzle, Good Broom,
 Hand Trowel, Fan Rake, Wheelbarrow.



Sheridan
 Nurseries

100+ YEARS



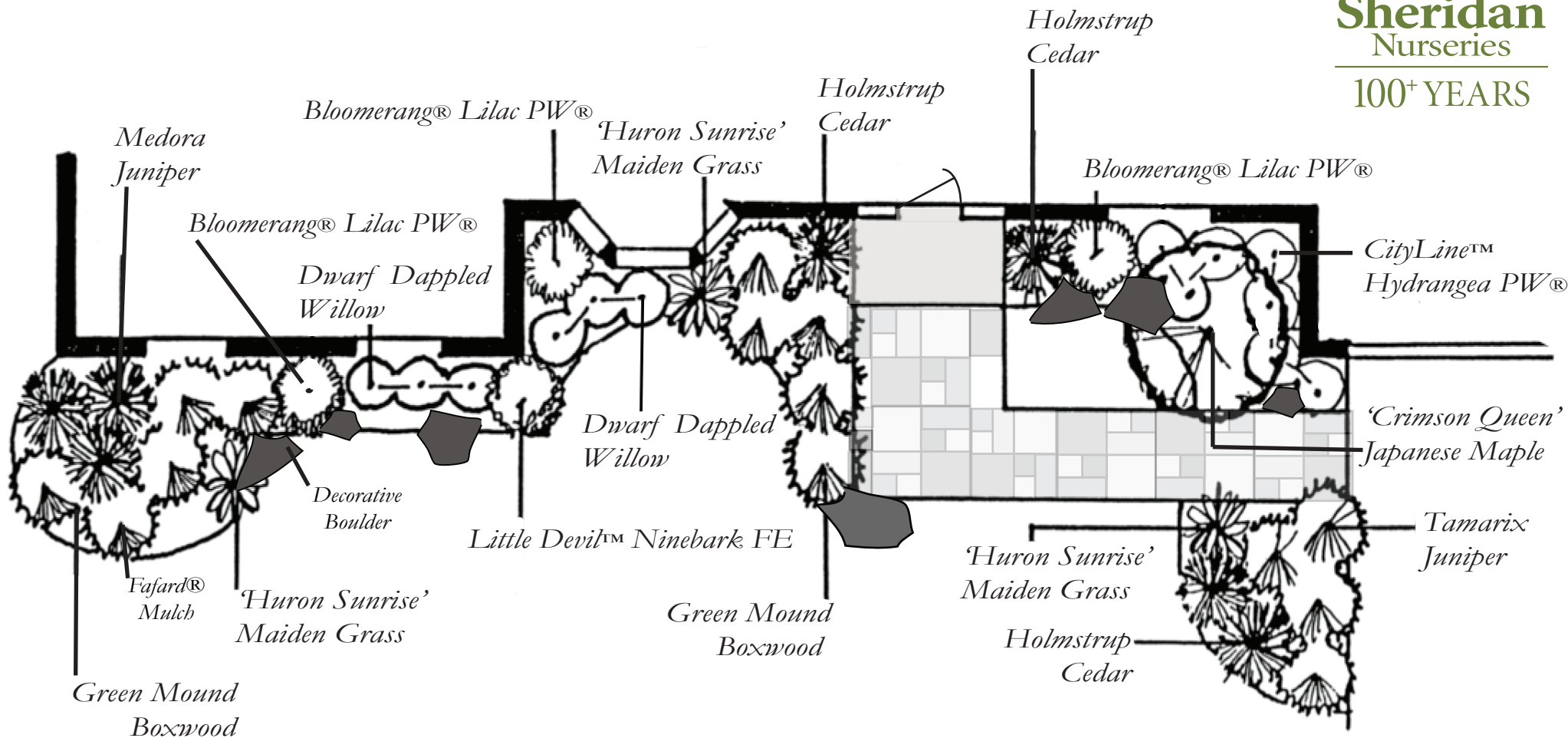
Sunny Front Entrance

Plant Species and variety may vary by store and availability.

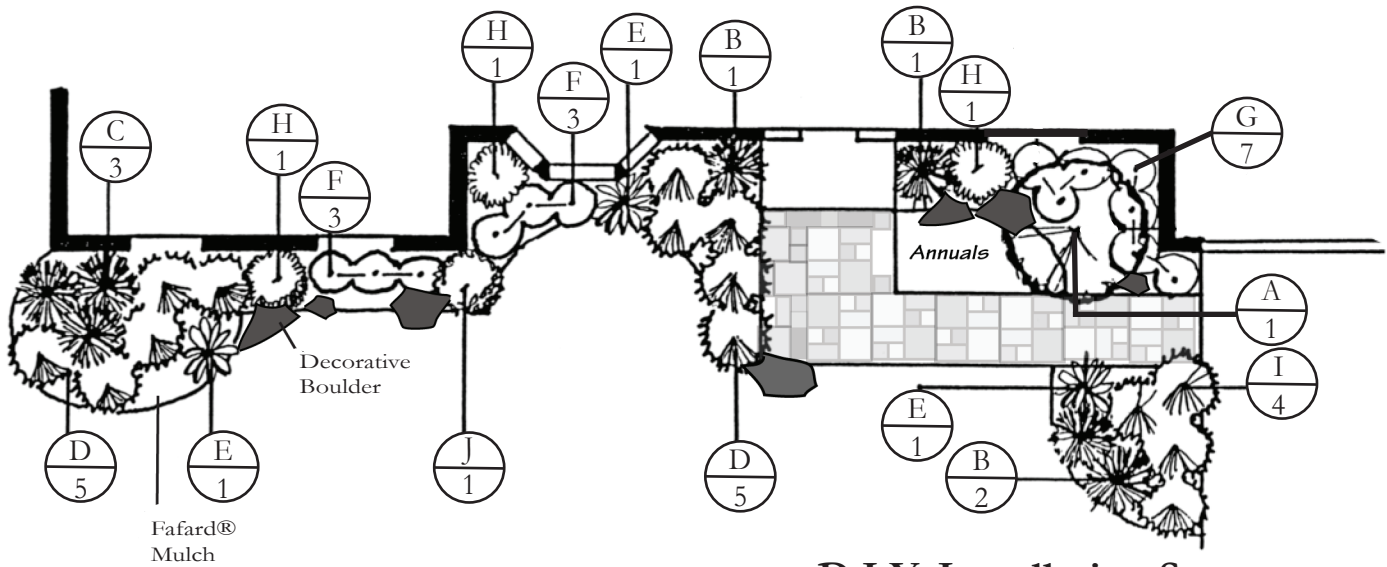


Sheridan
Nurseries

100+ YEARS



Landscape Plan: Sunny Front Entrance



Shopping List

- A. 'Crimson Queen' Japanese Maple (1)
- B. Holmstrup Cedar (4)
- C. Medora Juniper (3)
- D. Green Mound Boxwood (10)
- E. 'Huron Sunrise' Maiden Grass (3)
- F. Dwarf Dappled Willow (6)
- G. CityLine™ Vienna Hydrangea PW®(7)
- H. Bloomerang® Lilac PW®(3)
- I. Tamarix Juniper (4)
- J. Little Devil™ Ninebark FE® (1)
- Parkwood® Transplanter (3 bottles)
- Parkwood® 3 in 1 Planting Mix (27 bags)
- Fafard® Cedar Mulch (27 bags)
- Parkwood® Plant Food (free refills)
- Annuals (seasonal)
- Decorative Boulder, sized accordingly (7)
- Garden Spade, Hoe, Hard Rake, Pruners,
Garden Hose w/Nozzle, Good Broom, Hand Trowel,
Fan Rake, Wheelbarrow.

D.I.Y. Installation Steps

Layout the garden. A hose or rope stretched to outline the new beds works well.

Remove sod, stones and debris from area.

Turn half of the Parkwood® 3 in 1 Planting Mix into existing soil, or remove existing soil and replace with Parkwood® 3 in 1 Planting Mix .

Place plants as per plan. Mark each location.

Dig a hole twice as wide as the container and 20 cm (8") deeper.

If the soil is compacted, gently loosen it at the bottom and on the sides with a shovel.

Fill in around each plant with Parkwood® 3 in 1 Planting Mix and press firmly to secure in place. Spread remaining soil.

Water the new beds with Parkwood® Transplanter, diluted and applied as per package.

Spread mulch evenly over beds and water again with plain water until well saturated.

Enjoy your new garden!

Don't forget to visit us frequently and refill your Parkwood® Plant Food jug for free! *
*Ask in-store for more details



Sheridan
Nurseries

100+ YEARS