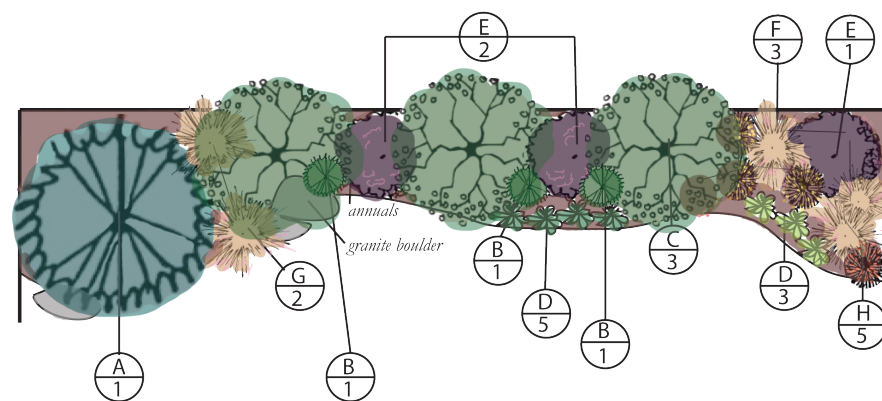


Sunny Fence Line (\$1700 - \$2500 depending on plant size)



Plants, Materials & Supplies

- A. Vanderwolf's Pyramid Limber Pine (1)
- B. Howell's Dwarf Tigertail Spruce (3)
- C. Chanticleer Pear (3)
- D. Hosta (*Selection may vary*) (8)
- E. Black Lace™ Elder PW® (3)
- F. 'Karley Rose' Fountain Grass (3)
- G. 'Piglet' Fountain Grass (2)
- H. Winterberry (Berry Heavy® Gold (3) & Jim Dandy (2))
- Granite Boulder (3)
- Bulbs: Allium
- Annuals: Verbena and Zinnia (summer)

- Parkwood® Transplanter (3 bottles)
- Parkwood® 3 in 1 Planting Mix (60 bags/2 yards)
- Fafard® Cedar Mulch (60 bags/2 yards)
- Parkwood® All Purpose Plant Food 20-20-20
- Jobe's® Tree & Shrub Fertilizer Spikes (10 spikes)

10 Essential Tools

- Garden Spade, Hoe, Hard Rake, Pruners, Garden Hose w/Nozzle,
- Good Broom, Hand Trowel, Fan Rake, Wheelbarrow.



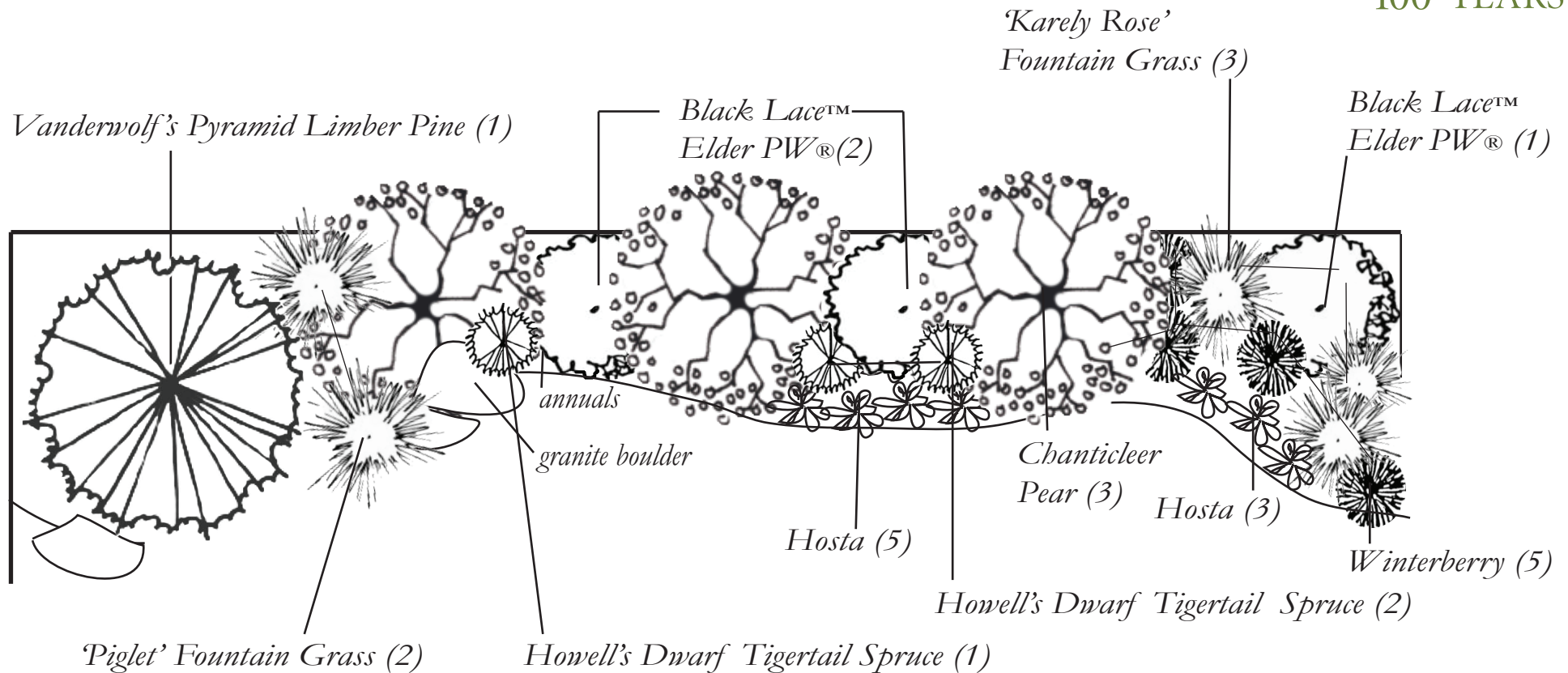
Sunny Fence Line

Plant Species and variety may vary by store and availability.

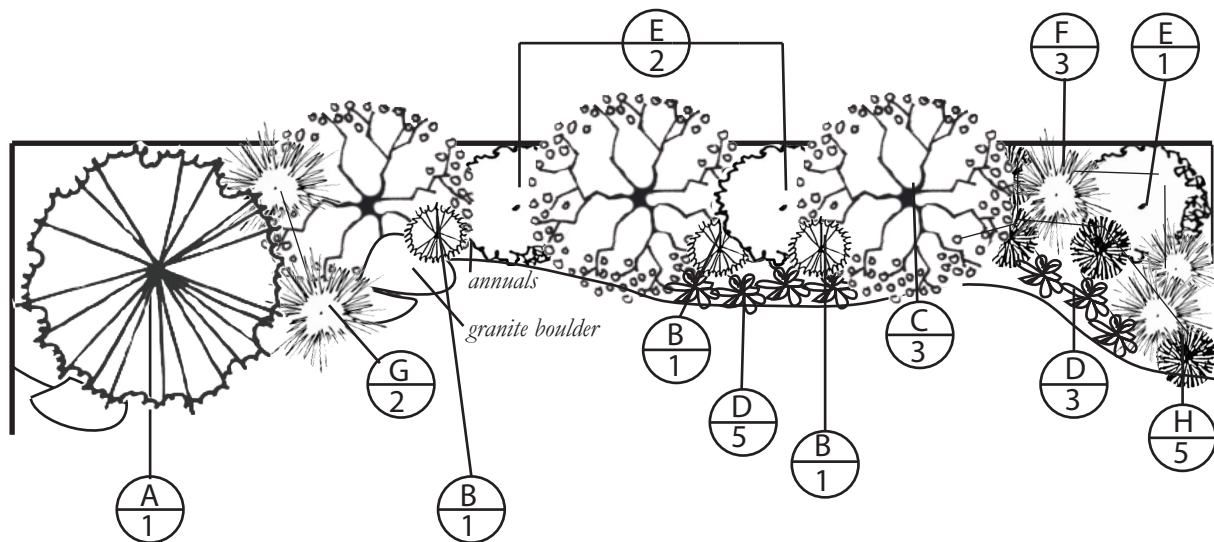


Sheridan
Nurseries

100+ YEARS



Landscape Plan: Sunny Fence Line



Shopping List

- ☐ A. Vanderwolf's Pyramid Limber Pine (1)
- ☐ B. Howell's Dwarf 'Tigertail Spruce (3)
- ☐ C. Chanticleer Pear (3)
- ☐ D. Hosta (*Selection may vary*) (8)
- ☐ E. Black Lace™ Elder PW® (3)
- ☐ F. 'Karley Rose' Fountain Grass (3)
- ☐ G. 'Piglet' Fountain Grass (2)
- ☐ H. Winterberry (Berry Heavy® Gold (3) & Jim Dandy (2))
- ☐ Granite Boulder (3)
- ☐ Bulbs: Allium
- ☐ Annuals: Verbena and Zinnia (summer)
- ☐ Parkwood® Transplanter (3 bottles)
- ☐ Parkwood® 3 in 1 Planting Mix (60 bags)
- ☐ Fafard® Cedar Mulch (60 bags)
- ☐ Parkwood® All Purpose Plant Food 20-20-20
- ☐ Jobe's® Tree & Shrub Fertilizer Spikes (10)
- ☐ Garden Spade, Hoe, Hard Rake, Pruners, Garden Hose w/Nozzle, Good Broom, Hand Trowel, Fan Rake, Wheelbarrow.



Sheridan
Nurseries

100+ YEARS

D.I.Y. Installation Steps

Layout the garden. A hose or rope stretched to outline the new beds works well.

Remove sod, stones and debris from area.

Turn half of the Parkwood® 3 in 1 Planting Mix into existing soil.

Place plants as per plan. Mark each location.

Dig a hole twice as wide as the container and 20 cm (8") deeper.

If the soil is compacted, gently loosen it at the bottom and on the sides with a shovel.

Fill in around each plant with Parkwood® 3 in 1 Planting Mix and press firmly to secure in place. Spread remaining soil.

Water the new beds with Parkwood® Transplanter to reduce shock, as per package.

Spread Fafard® Cedar Mulch evenly over beds and water again with plain water until well saturated.

Enjoy your new fence line landscape.

* Your fence line garden will provide food and shelter for many birds and small mammals. Keeping beds mulched throughout the seasons will attract foraging wildlife, helping to combat garden pests. Mulch also keeps your soil moist reducing the need for daily watering.