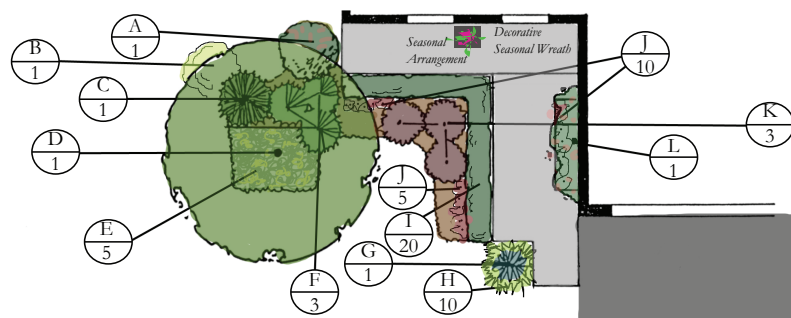




Shady Front Entrance (\$1200 - \$2000 depending on plant selection)



Plants, Materials & Supplies

- A. Amethyst™ Coralberry PW® (1)
- B. Tiger Eyes® Staghorn Sumac FE® (1)
- C. Jeddeloh Dwarf Hemlock (1)
- D. Downy Serviceberry Tree(1)
- E. St. John's Wort (5)
- F. Hills Yew (3)
- G. Blue Hosta (*Selection may vary*) (1)
- H. 'Golden Variegated' Japanese Forest Grass (10)
- I. Green Mountain Boxwood (20)
- J. 'Midnight Rose' Coral Bells (15)
- K. Ruby Carousel® Japanese Barberry (3)
- L. 'Comtesse de Bouchard' Clematis (1)

- Large Resin Planter (*Selection may vary*)
- Seasonal Arrangement with twigs(s)
- Decorative Wreath (*Selection may vary*)
- Composted Manure, for Clematis at planting (1 bag)
- Agricultural Lime, for Clematis at planting (1 box)
- Parkwood® 3 in 1 Planting Mix (27 bags)
- Fafard® Cedar Mulch (20 bags)
- Parkwood® Transplanter 5-15-5 (2)
- Parkwood® All Purpose Plant Food 20-20-20 (1)

10 Essential Tools

Garden Spade, Hoe, Hard Rake, Pruners, Garden Hose w/Nozzle, Good Broom, Hand Trowel, Fan Rake, Wheelbarrow.



Sheridan
Nurseries

100+ YEARS



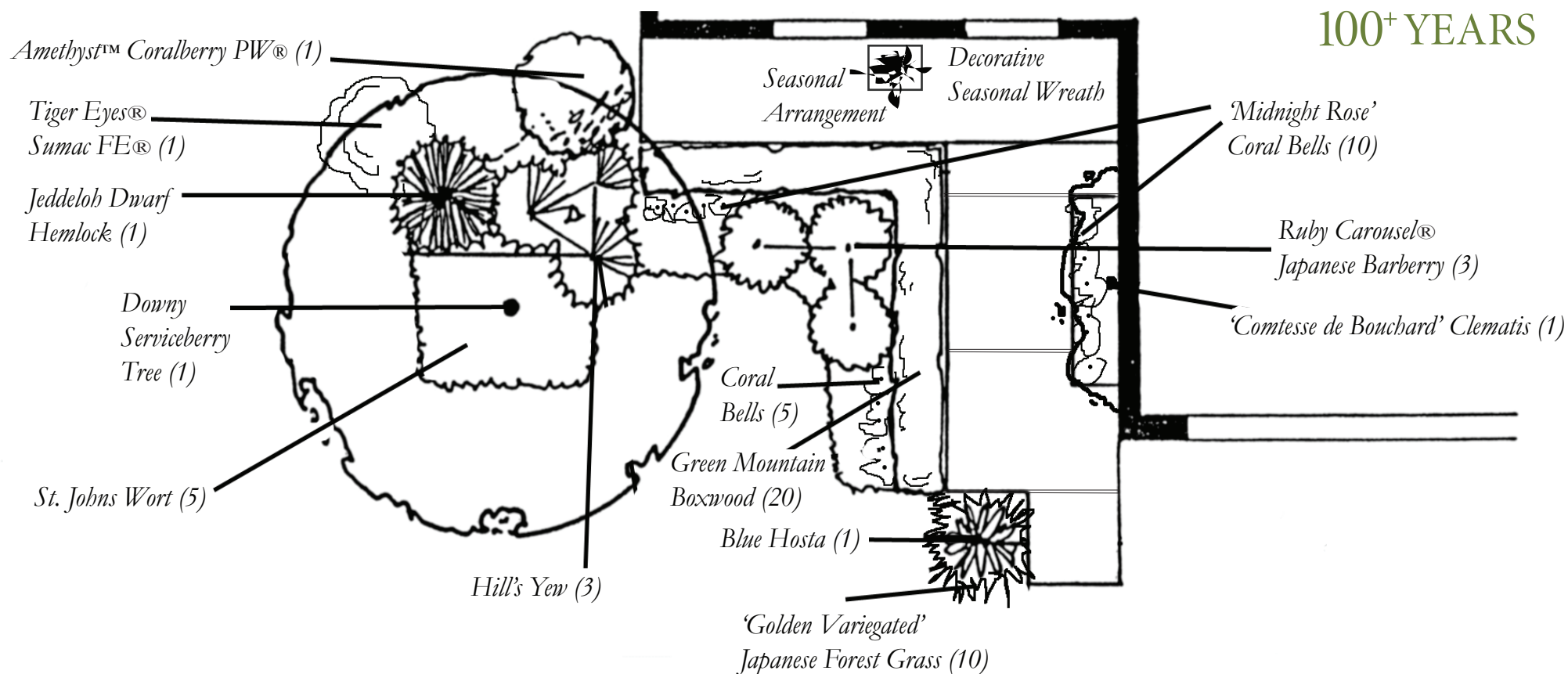
Shady Front Entrance

Plant Species and variety may vary by store and availability.

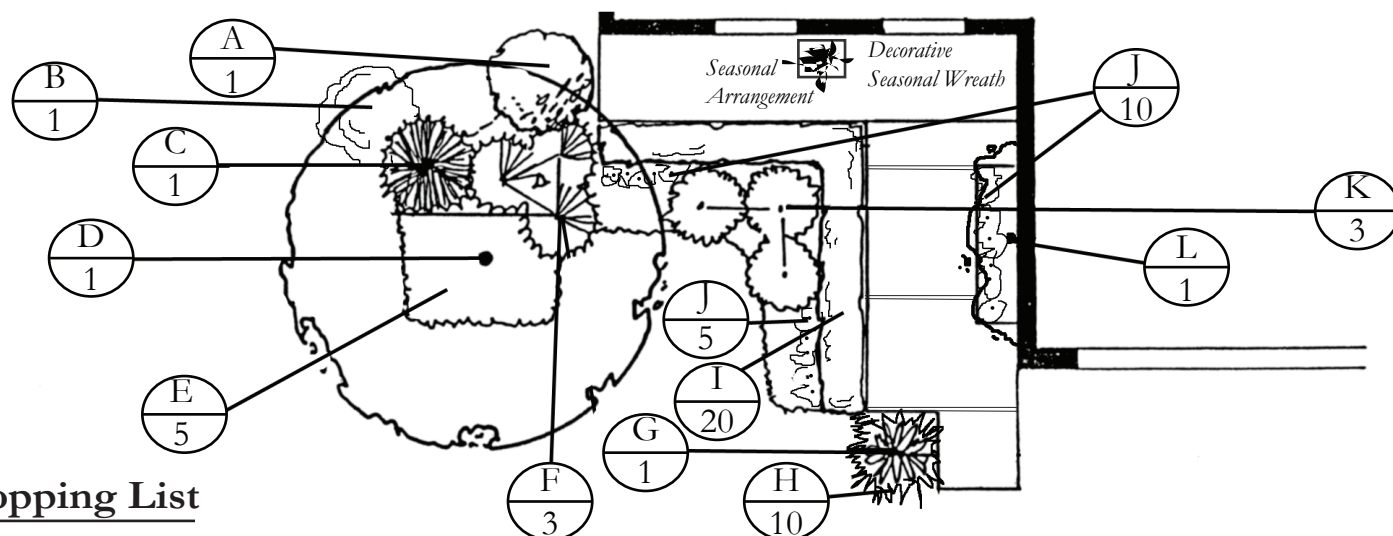


Sheridan
Nurseries

100+ YEARS



Landscape Plan: Shady Front Entrance



Shopping List

- ☒ A. Amethyst™ Coralberry PW® (1)
- ☒ B. Tiger Eyes® Sumac FE® (1)
- ☒ C. Jeddeloh Dwarf Hemlock (1)
- ☒ D. Downy Serviceberry Tree (1)
- ☒ E. St. John's Wort (5)
- ☒ F. Hill's Yew (3)
- ☒ G. Blue Hosta (*Selection may vary*) (1)
- ☒ H. 'Golden Variegated' Japanese Forest Grass (10)
- ☒ I. Green Mountain Boxwood (20)
- ☒ J. 'Midnight Rose' Coral Bells (15)
- ☒ K. Ruby Carousel® Japanese Barberry (3)
- ☒ L. 'Comtesse de Bouchard' Clematis (1)
- ☒ Manure (1 bag), Agricultural Lime (1 box)
- ☒ Large Resin Planter (*Selection may vary*)
- ☒ Seasonal Arrangement with twigs(s)
- ☒ Decorative Wreath (*Selection may vary*)
- ☒ Parkwood® 3 in 1 Planting Mix (27 bags)
- ☒ Fafard® Cedar Mulch (20 bags)
- ☒ Parkwood® Transplanter 5-15-5 (2)
- ☒ Parkwood® All Purpose Plant Food 20-20-20 (1)
- ☒ Garden Spade, Hoe, Hard Rake, Pruners,
Garden Hose w/Nozzle, Good Broom, Hand Trowel,
Fan Rake, Wheelbarrow.

D.I.Y. Installation Steps

Layout the garden as per plan.

Remove sod, stones and debris from area.

Turn half of the Parkwood® 3 in 1 Planting Mix into existing soil, or remove all existing soil and replace with Parkwood® 3 in 1 Planting Mix.

In the Clematis bed, follow above steps, but also turn in manure and Agricultural lime.

Place plants as per plan. Mark each location.

Dig a hole twice as wide as the container and 20 cm (8") deeper.

If the soil is compacted, gently loosen it at the bottom and on the sides with a shovel.

Fill in around each plant with Parkwood® 3 in 1 Planting Mix and press firmly to secure in place.

Spread remaining Parkwood® 3 in 1 Planting Mix.

Water the new beds with Parkwood® Transplanter, diluted and applied as per package.

Spread mulch evenly over beds and water again with plain water until well saturated.

Enjoy your new garden!

*Adding a flowering vine to the front of your home is a cheerful expression to welcome you home each day. Choosing the right variety for your light and soil conditions will ensure months of gorgeous blooms. With a narrow profile, a vine is the perfect option to add beauty to the small gardens against your home.



Sheridan
Nurseries

100+ YEARS