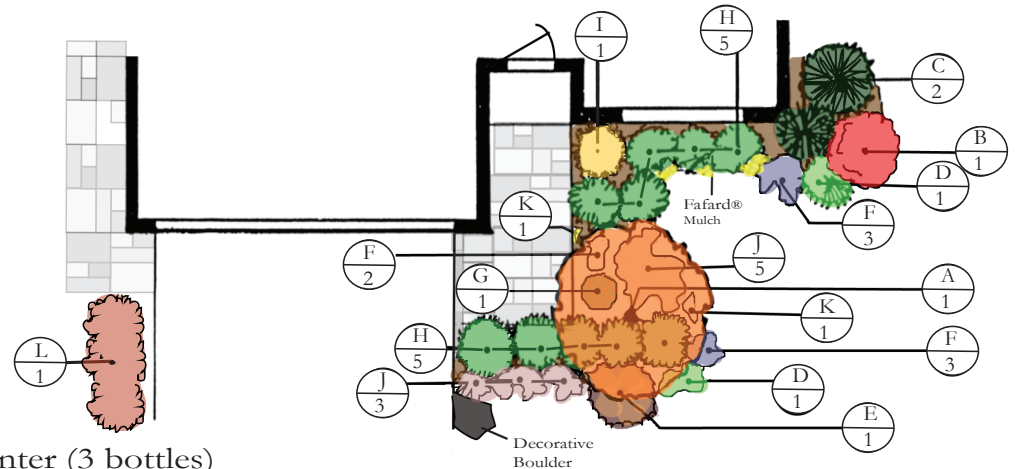


Quick Curb Appeal - Fall (\$800 - \$1800 depending on plant size)



Plants, Materials & Supplies

- A. Downy Serviceberry (Tree) (1)
- B. Dwarf Burning Bush (1)
- C. DeGroot's Spire Cedar (2)
- D. Dwarf Hinoki False Cypress (2)
- E. Coppertina® Ninebark PW® (1)
- F. 'Obsidian' Coral Bells (8)
- G. Bearberry Cotoneaster (1)
- H. Green Mountain Boxwood (10)
- I. 'Tiger Eyes® Sumac FE® (1)
- J. 'Marmalade' Coral Bells (8)
- K. Yellow Mums (5 pots in bloom)
- L. Gro-Low Fragrant Sumac (1)

- Parkwood® Transplanter (3 bottles)
- Parkwood® 3 in 1 Planting Mix (13 bags)
- Fafard® Cedar Mulch (27 bags)
- Parkwood® All Purpose Plant Food 20-20-20
- Decorative Boulder, sized accordingly (1)

10 Essential Tools

Garden Spade, Hoe, Hard Rake, Pruners, Garden Hose w/Nozzle,
Good Broom, Hand Trowel, Fan Rake, Wheelbarrow.



Sheridan
Nurseries
100+ YEARS



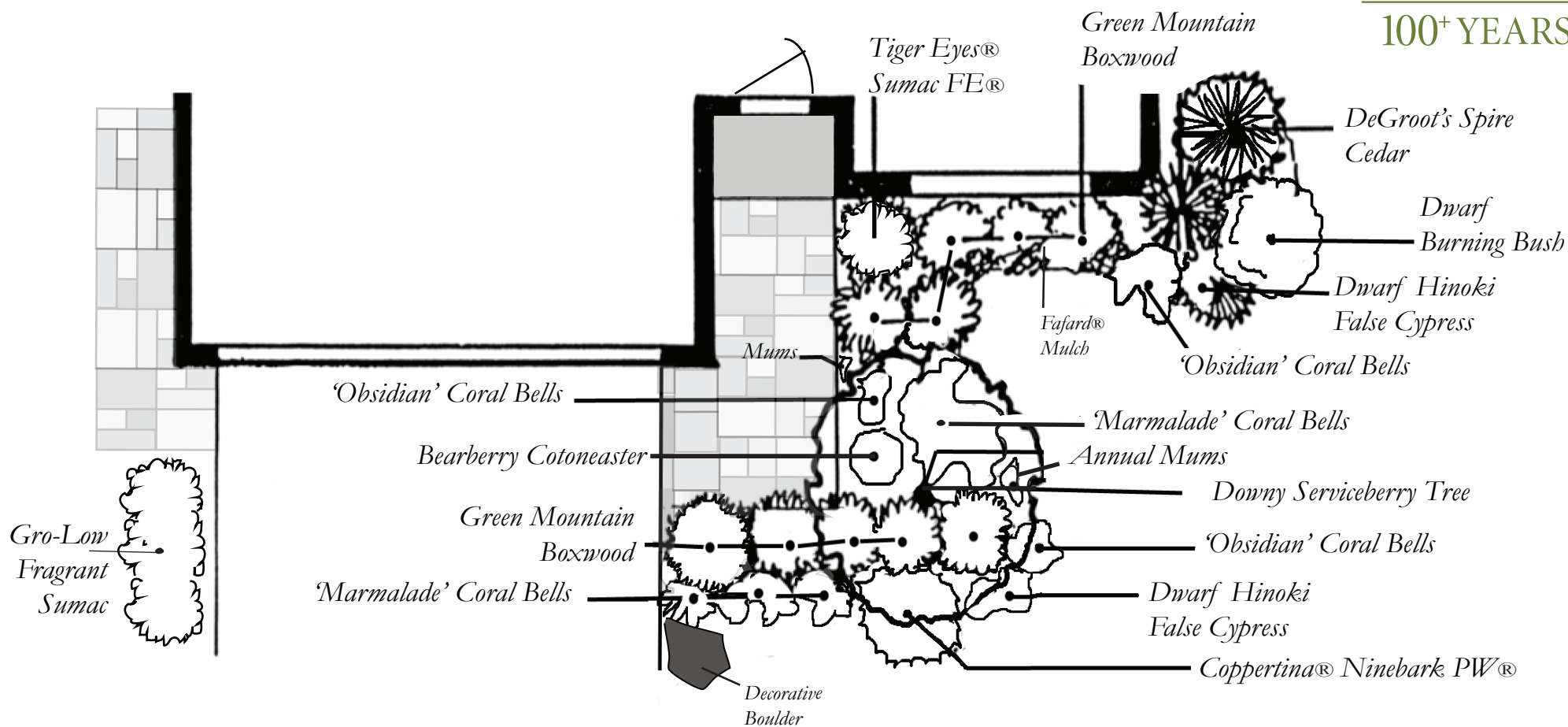
Quick Curb Appeal - Fall

Plant Species and variety may vary by store and availability.

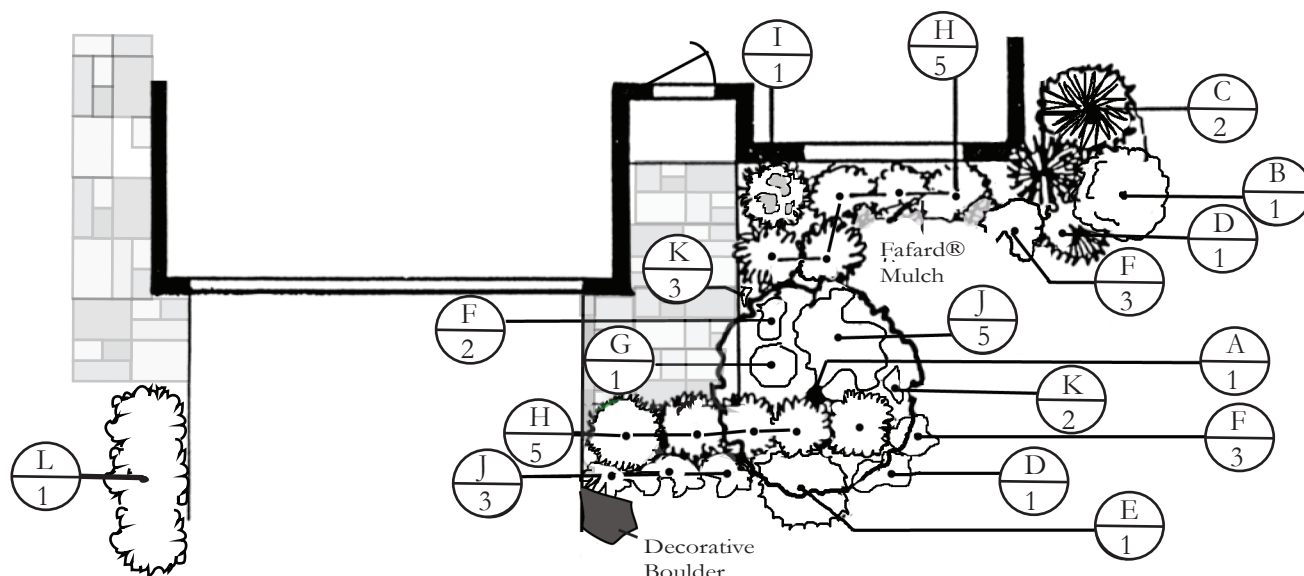


Sheridan
Nurseries

100+ YEARS



Landscape Plan: Quick Curb Appeal - Fall



Shopping List

- ☐ A. Downy Serviceberry (Tree) (1)
- ☐ B. Dwarf Burning Bush (1)
- ☐ C. DeGroot's Spire Cedar (2)
- ☐ D. Dwarf Hinoki False Cypress (2)
- ☐ E. Coppertina® Ninebark PW® (1)
- ☐ F. 'Obsidian' Coral Bells (8)
- ☐ G. Bearberry Cotoneaster (1)
- ☐ H. Green Mountain Boxwood (10)
- ☐ I. Tiger Eyes® Sumac FE® (1)
- ☐ J. 'Marmalade' Coral Bells (8)
- ☐ K. Yellow Mums (5 pots in bloom)
- ☐ L. Gro-Low Fragrant Sumac (1)
- ☐ Parkwood® Transplanter (3 bottles)
- ☐ Parkwood® 3 in 1 Planting Mix (13 bags)
- ☐ Fafard® Cedar Mulch (27 bags)
- ☐ Parkwood® All Purpose Plant Food 20-20-20
- ☐ Decorative Boulder, sized accordingly (1)
- ☐ Garden Spade, Hoe, Hard Rake, Pruners,
Garden Hose w/Nozzle, Good Broom,
Hand Trowel, Fan Rake, Wheelbarrow.



Sheridan
Nurseries
100+ YEARS

D.I.Y. Installation Steps

Layout the garden. A hose or rope stretched to outline the new beds works well.

Remove sod, stones and debris from area.

Turn half of the Parkwood® 3 in 1 Planting Mix into existing soil.

Place plants as per plan. Mark each location.

Dig a hole twice as wide as the container and 20 cm (8") deeper.

If the soil is compacted, gently loosen it at the bottom and on the sides with a shovel.

Fill in around each plant with Parkwood® 3 in 1 Planting Mix and press firmly to secure in place. Spread remaining soil.

Water the new beds with Parkwood® Transplanter, to reduce shock, as per package.

Spread mulch evenly over beds and water again with plain water until well saturated.

You have just added significant value to your home!

* When the Mums have finished flowering and frost is in the air at night, remove mums and other annuals from the garden. You can compost all your garden waste in large brown bags, available at your local Sheridan Nurseries.