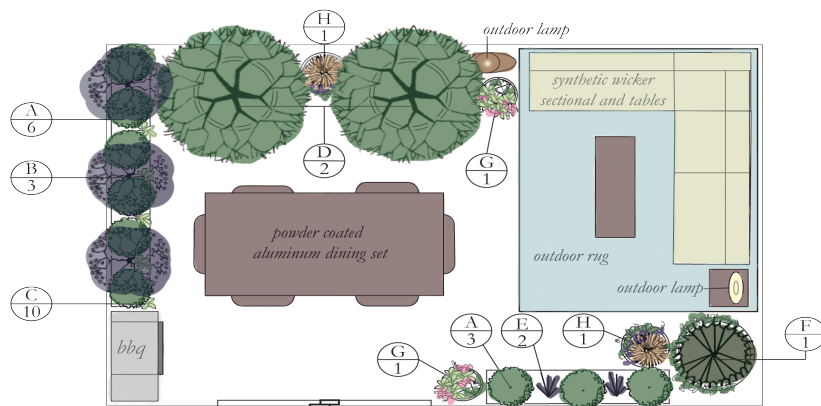




## Large Relaxing Balcony (check store for pricing details)



### Plants, Materials & Supplies

- A. Green Velvet™ Boxwood (9)
- B. Dwarf Oakleaf Hydrangea (3)
- C. Rapido Blue Bellflower (9)
- D. Potted Pagoda Dogwood (2)
- E. 'Twilight Zone' Little Blue Stem Grass (2)
- F. Potted Dwarf Blue Spruce (1):  
(underplanted with trailing Periwinkle ground cover)
- G. Potted Arrangement (2):  
(Fireberry Astilbe, Bergenia, Ivy Geranium)
- H. Potted Arrangement (2):  
(Fountain Grass, Wave® Petunia, Lungwort)
- Powder Coated Aluminum Dining Set
- XL Large Resin Pots for Trees (3)
- Fibrestone Pots for Arrangements (4)

- High-End Synthetic Wicker Sectional (1)
- Synthetic Wicker Coffee/Side Tables (2)
- Outdoor Rug (1)
- Outdoor Table/ Floor Lamps (2)
- Parkwood® Enriched Potting Mix (17 bags)
- Fafard® Sea Compost (approx 5 bags)
- Parkwood® Transplanter 5-15-5 (2 bottles)

### 10 Essential Tools

Hand Spade, Garden Fork, Pruners, Watering Can, Burlap, Jute, Garden Scissors,  
Garden Hose w/Nozzle, Garden Gloves



**Sheridan**  
Nurseries

100+ YEARS



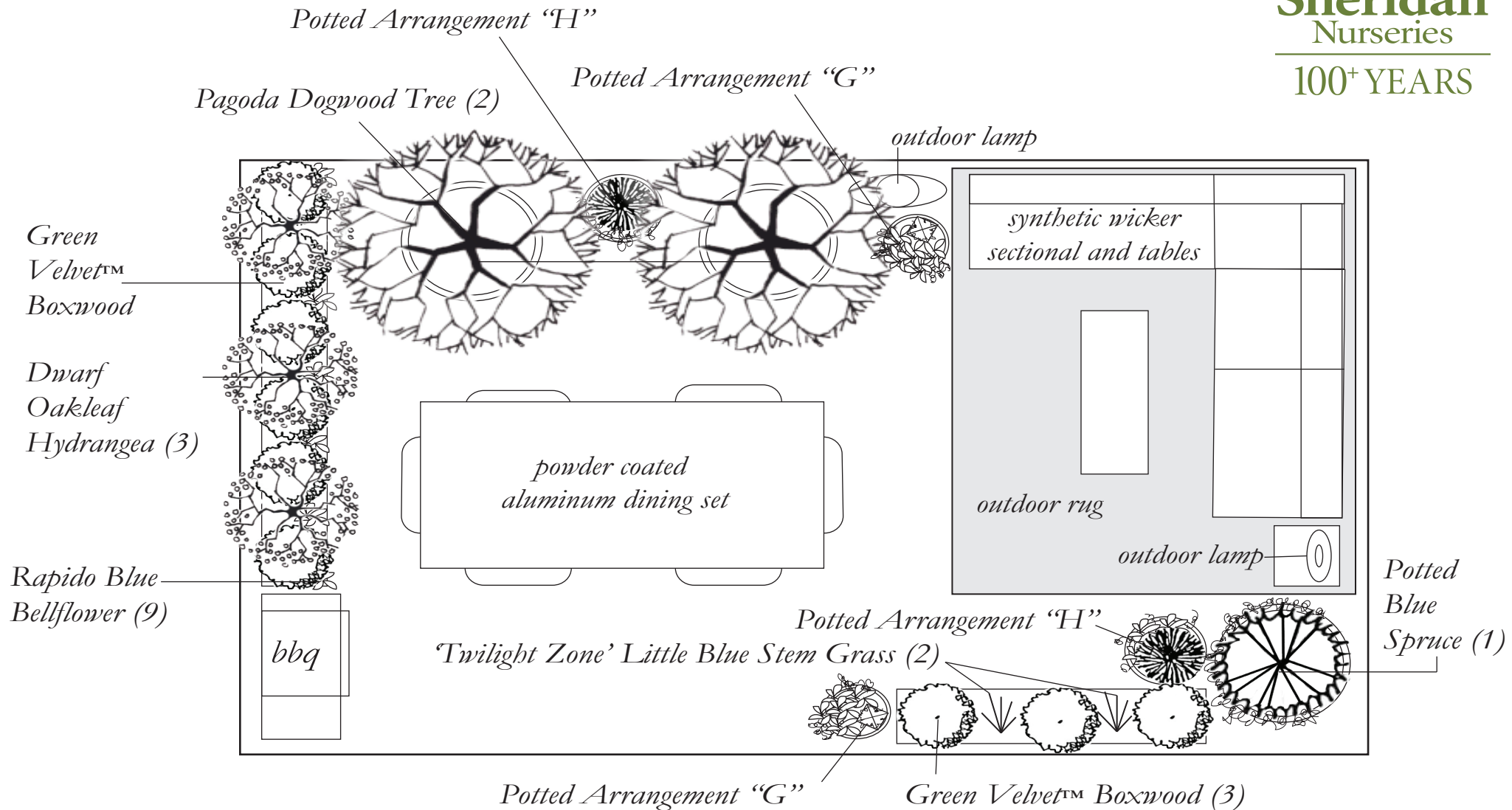
# Large Relaxing Balcony/ Terrace

*Plant species and accessories may vary by store and availability.*

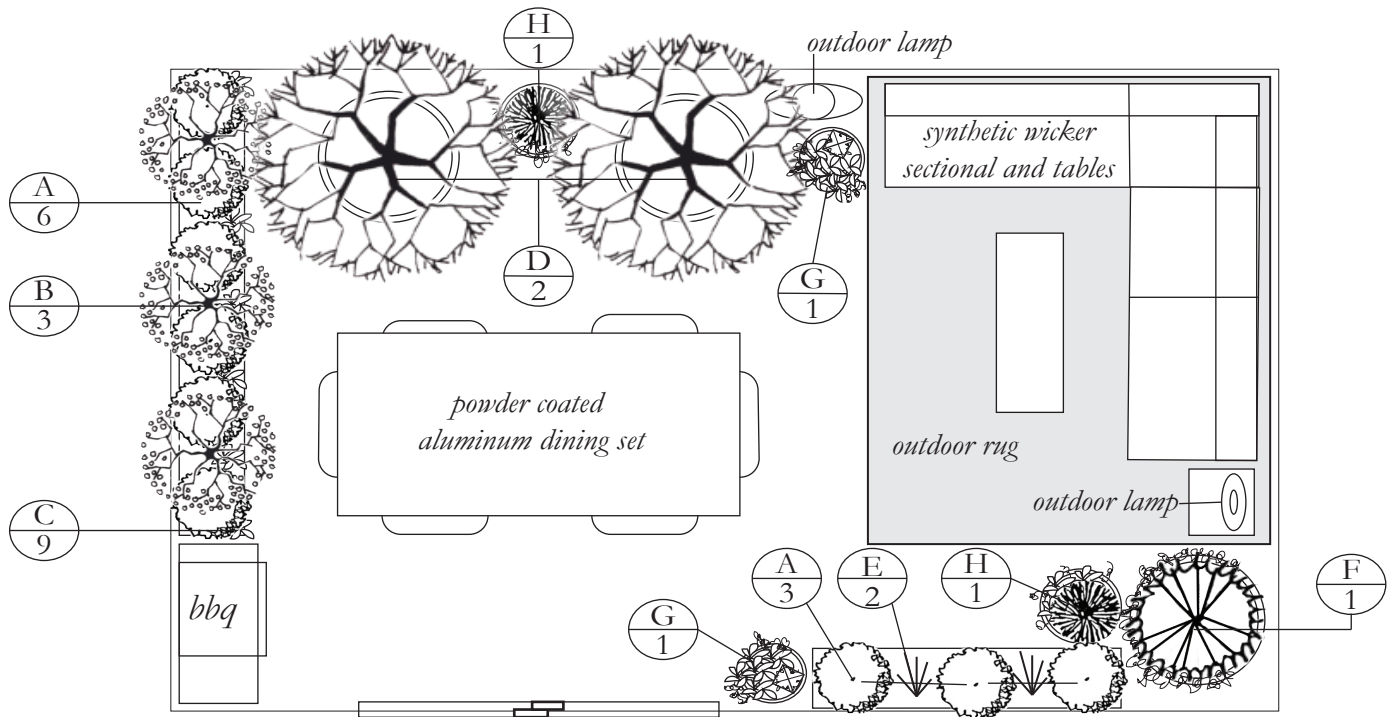


**Sheridan**  
Nurseries

100+ YEARS



# Landscape Plan: Large Relaxing Balcony



## Shopping List

- ☒ A. Green Velvet™ Boxwood (9)
- ☐ B. Dwarf Oakleaf Hydrangea (3)
- ☒ C. Rapido Blue Bellflower (9)
- ☐ D. Potted Pagoda Dogwood (2)
- ☒ E. 'Twilight Zone' Little Blue Stem Grass (2)
- ☐ F. Potted Dwarf Blue Spruce (1):  
(underplanted with trailing Periwinkle ground cover)
- ☒ G. Potted Arrangement (2):  
(Fireberry Astilbe, Bergenia, Ivy Geranium)
- ☐ H. Potted Arrangement (2):  
(Fountain Grass, Wave® Petunia, Lungwort)
- ☒ Powder Coated Aluminum Dining Set
- ☐ XL Large Resin Pots for Trees (3)
- ☒ Fibrestone Pots for Arrangements (4)
- ☐ High-End Synthetic Wicker Sectional (1)
- ☒ Synthetic Wicker Coffee/Side Tables (2)
- ☐ Outdoor Rug (1)
- ☒ Outdoor Table/ Floor Lamps (2)
- ☐ Parkwood® Enriched Potting Mix (17 bags)
- ☒ Fafard® Sea Compost (approx 5 bags)
- ☐ Parkwood® Transplanter 5-15-5 (2 bottles)
- ☒ Hand Spade, Garden Fork, Pruners, Watering Can,  
Burlap, Jute, Garden Scissors, Garden Hose w/Nozzle,  
Garden Gloves

## D.I.Y. Installation Steps

Wash surface of balcony or patio.

Place furniture and containers as per plan.

Place a piece of foam inside your pots before filling to allow water to drain but keep soil in.

If the roots are pot bound, gently loosen bottom and sides with your fingers, then plant.

Fill in around each plant with Parkwood® Enriched Potting Mix and Fafard® Sea Compost, pressing firmly to secure in place. Leave a 3" distance from pot top to allow for proper watering.

Mix Parkwood® Transplanter together with water and evenly distribute to your new plants.

Water regularly to keep soil moist but not soggy.

\* Creating an oasis on your balcony or terrace can provide as much enjoyment as a backyard. More annual blooms can be added to your pots, providing endless seasonal colour and inspiration.



**Sheridan**  
Nurseries

100+ YEARS